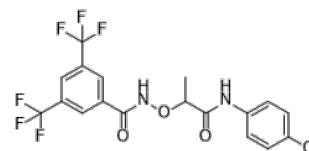


**Product Name** : CCG-1423  
**Cat. No.** : PC-22494  
**CAS No.** : 285986-88-1  
**Molecular Formula** : C<sub>18</sub>H<sub>13</sub>ClF<sub>6</sub>N<sub>2</sub>O<sub>3</sub>  
**Molecular Weight** : 454.75  
**Target** : Other Targets  
**Solubility** : 10 mM in DMSO



## Biological Activity

CCG-1423 (CCG1423) is a small-molecule inhibitor of RhoA transcriptional signaling and serum response factor (SRF), blocks transcription activated by MKL1, disrupts transcriptional responses of the Rho pathway in cancer. CCG-1423 blocks transcription activated by MKL1, but not that induced by SRF-VP16 or GAL4-VP16. CCG-1423 inhibits lysophosphatidic acid-induced DNA synthesis in PC-3 prostate cancer cells, and inhibits the growth of RhoC-overexpressing melanoma lines (A375M2 and SK-Mel-147) at nanomolar concentrations. CCG-1423 is less active on related lines (A375 and SK-Mel-28) that express lower levels of Rho. CCG-1423 selectively stimulates apoptosis of the metastasis-prone, RhoC-overexpressing melanoma cell line (A375M2) compared with the parental cell line (A375). CCG-1423 inhibits Rho-dependent invasion by PC-3 prostate cancer cells, wherea it does not affect the Gai-dependent invasion by the SKOV-3 ovarian cancer cell line.

## References

- Evelyn CR, et al. *Mol Cancer Ther.* 2007 Aug;6(8):2249-60.  
 Jin W, et al. *J Clin Invest.* 2011 Mar;121(3):918-29.  
 Evelyn CR, et al. *Bioorg Med Chem Lett.* 2010 Jan 15;20(2):665-72.

**Caution: Product has not been fully validated for medical applications. Lab Use Only!**

E-mail: tech@probechem.com